



STARCYL CYLINDERS

MULTI-STAGES AIR CYLINDERS



**MULTI-STAGES NFPA STYLE MOUNT
HEAVY DUTY - HIGH FLOW**

NOMINAL PRESSURE -AIR 250 PSI

STANDARD BORE SIZES 1.5" THROUGH 10"

STROKE UP TO 12"

NFPA STYLE MOUNT

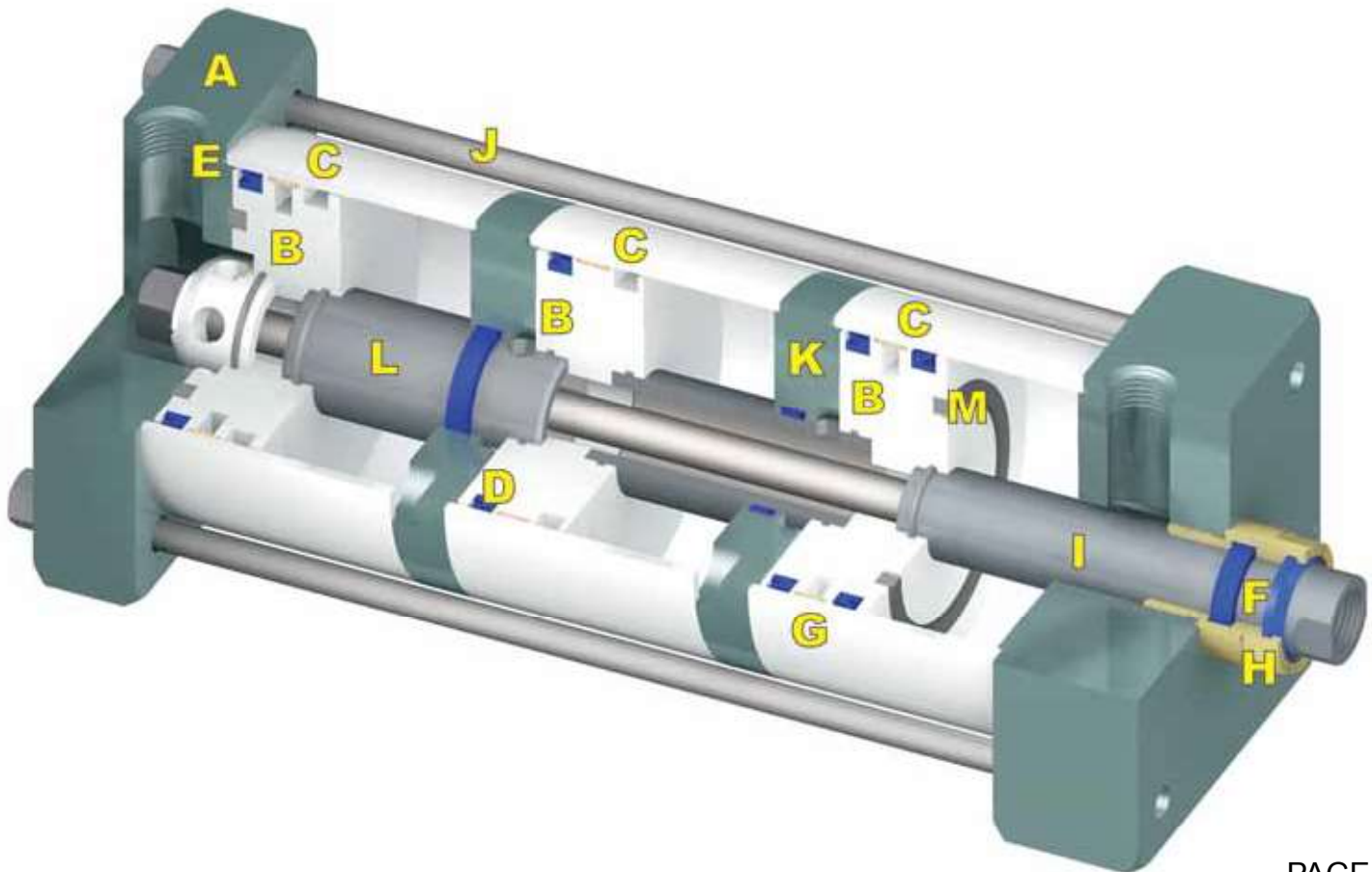
TWO-YEAR WARRANTY

**M3
SERIES**

M3 MULTISTAGE CYLINDERS - Design features

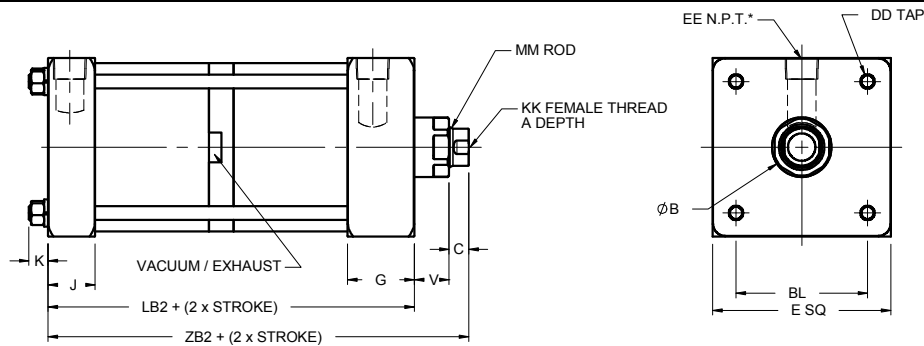
- A** **Solid Aluminum Head & Cap**
Machined from solid aluminum bar stock (6061 T6) and black anodized for corrosion resistance. (Also available in Stainless Steel).
- B** **Piston**
Machined from solid aluminum bar stock (6061-T6). Offers long bearing support.
- C** **Hard Anodized ID Aluminum Tube**
(60 Rc) Provides superior wear resistance, and lower friction coefficient for maximum seal life. (Also available in Stainless Steel.)
- D** **Piston Seal**
Lip-type low friction urethane piston seals are pressure energized and wear compensating for low friction and long life (temperature: -50° to 200°F) (Viton™ also Available up to 400°F) (all seals can be used in a non lube application)
- E** **O-ring Tube End Seals**
Nitrile O-ring design is pressure compensated and reusable.
- F** **Rod lips seal + wiper**
Our **New Design** with a real rod u-cup is completely self compensating for zero leakage at all pressures (all seals can be used in a non lube application) The **New Wiper Wipes** dirt out for less maintenance and longer life of the cylinder. (Urethane) (temperature: -50° to 200°F)
- G** **Piston Wear Ring**
Nylon material is design for low friction, and to ensure minimum wear in the cylinder in side load application. Eliminates metal-to-metal contact.

- H** **Rod Gland**
Bronze gland is externally removable without cylinder disassembly for easy maintenance. Designed to provide maximum rod bearing. (Also available in Acetal)
- I** **Piston Rod**
High Strength steel. NITROCARBURIZING treatment on the rod gives better corrosion-resistant properties (out performs 12-micron (.0005 in.) chromium electroplating by ratio up to 20:1.), improved wear resistance, better lubrication retention, dent resistance without induction hardening (60Rc), environmentally Friendly, no surface pitting, flaking, or hydrogen embrittlement. The finish created by the process is a lustrous black. (Available in stainless steel)
- J** **Tie rods**
Corrosion resistant (Nitro carburizing), stress proof steel maintains uniform compression on tube end seals. (Available in Stainless steel)
- K** **Mid Plate**
High Flow Mid plate with 2 orifice (vent/vaccum) Made of 6061-T6 Aluminum and Black anodized, design for resistance, and Flow in mind (available with 2 or 3 port for external vent/vaccum or muffler).
- L** **Upper Rod**
High Strength steel. NITROCARBURIZING treatment on the rod. High Flow design.
- M** **Bumper**
Incorporated bumper in piston to ensure long life and noise free, design for long life, those bumper are incorporated into the piston with enough

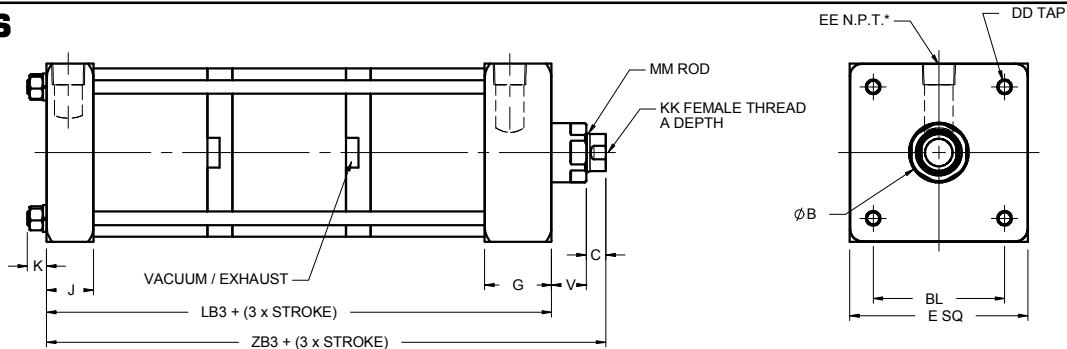


M3 MULTISTAGE CYLINDERS - Dimensions

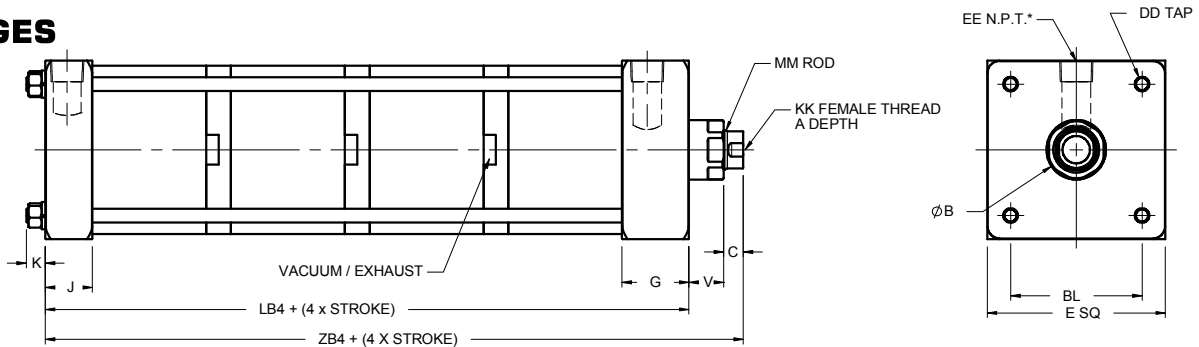
2 STAGES



3 STAGES



4 STAGES



BORE	A	B	BL	C	E	DD	EE	G	J	KK	MM	V
1 1/2	3/4	1 1/8	1,43	3/8	2	1/4-28	3/8	1 1/2	1	7/16-20	5/8	5/8
2	3/4	1 1/8	1,84	3/8	2 1/2	5/16-24	3/8	1 1/2	1	7/16-20	5/8	5/8
2 1/2	3/4	1 1/8	2,19	3/8	3	5/16-24	3/8	1 1/2	1	7/16-20	5/8	5/8
3 1/4	1 1/8	1 1/2	2,78	1/2	3 3/4	3/8-24	1/2	1 3/4	1 1/4	3/4-16	1	7/8
4	1 1/8	1 1/2	3,32	1/2	4 1/2	3/8-24	1/2	1 3/4	1 1/4	3/4-16	1	7/8
5	1 1/8	1 1/2	4,12	1/2	5 1/2	1/2-20	1/2	1 3/4	1 1/4	3/4-16	1	7/8
6	1 5/8	2	4,88	5/8	6 1/2	1/2-20	3/4	2	1 1/2	1-14	1 3/8	1
8	1 5/8	2	6,44	5/8	8 1/2	5/8-18	3/4	2	1 1/2	1-14	1 3/8	1

BORE	2 STAGES		3 STAGES		4 STAGES	
	LB2	ZB2	LB3	ZB3	LB4	ZB4
1 1/2	5 3/8	6 3/8	7 1/8	8 1/8	8 7/8	9 7/8
2	5 3/8	6 3/8	7 1/8	8 1/8	8 7/8	9 7/8
2 1/2	5 5/8	6 5/8	7 1/2	8 1/2	9 3/8	10 3/8
3 1/4	6 1/4	7 5/8	8 1/4	9 5/8	10 1/4	11 5/8
4	6 1/4	7 5/8	8 1/4	9 5/8	10 1/4	11 5/8
5	6 3/4	8 1/8	9	10 3/8	11 1/4	12 5/8
6	7 1/2	9 1/8	10	11 5/8	12 1/2	14 1/8
8	7 3/4	9 3/8	10 3/8	12	13	14 5/8

M3 SERIES - Rod Thread Dimensions & Forces

ROD END STYLE

FULL MALE #1F
MM ROD
FF THD
C
A
V

SMALL MALE #2*
MM ROD
KK THD
C
A
V

SMALL MALE #2S STUDED
MM ROD
KK THD
C
A
V

LARGE MALE #1
MM ROD
CC THD
C
A
V

FEMALE #4
MM ROD
KK THD
A DEEP
C
V

WRENCH FLATS
D

* FOR 5/8 & 1" ROD, THE ROD END WILL BE STUDED #2S STANDARD

ROD DIA.	A	C	D	V	CC	FF	KK
5/8	3/4	3/8	1/2	5/8	1/2-20	5/8-18	7/16-20
1	1 1/8	1/2	7/8	7/8	7/8-14	1-14	3/4-16
1 3/8	1 5/8	5/8	1 3/16	1	1 1/4-12	1 3/8-12	1-14
1 3/4	2	3/4	1 1/2	1 1/8	1 1/2-12	1 3/4-12	1 1/4-12
2	2 1/4	7/8	1 3/4	1 1/8	1 3/4-12	2-12	1 1/2-12

LARGE MALE #1F FULL MALE #1F SMALL MALE #2, #2S, #4

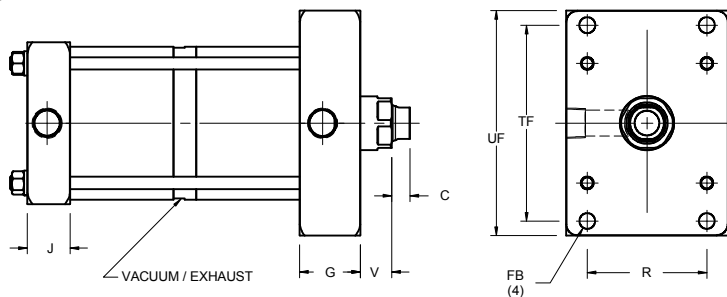
This grid is to show How much force you can get by using our M3 Multistage cylinder. All the forces are calculated with a pressure of 100 ps.i. Multistage cylinders can be use in push (extend) or Pull (retract) or Both, Stock stroke is 1, 2, 3, 4, 6", but can be ordered up to 12" stroke

FORCE (in pounds at 100 psi)						
BORE	2 STAGES		3 STAGES		4 STAGES	
	Extend	Retract	Extend	Retract	Extend	Retract
1 1/2	275	244	373	342	471	441
2	550	519	785	755	1021	990
2 1/2	903	873	1316	1285	1728	1697
3 1/4	1511	1432	2192	2113	2873	2794
4	2365	2286	3473	3394	4581	4503
5	3779	3700	5594	5515	7409	7330
6	5414	5266	8001	7853	10588	10440
8	9813	9664	14599	14450	19385	19236

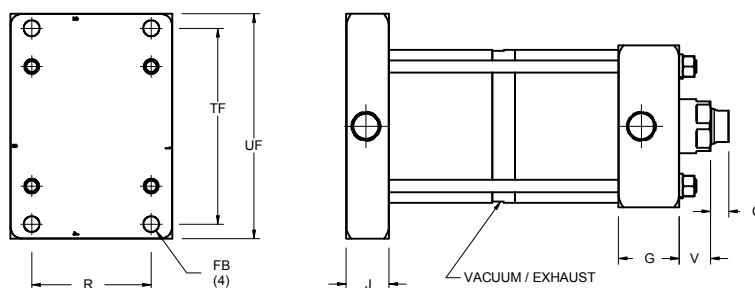
More Stage than 4 can be ordered ask your sales representative for a special quote. 10" bore also available on special request.

M3 SERIES - Mounting Dimensions

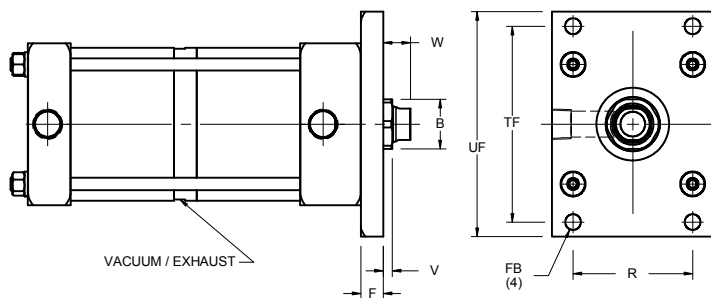
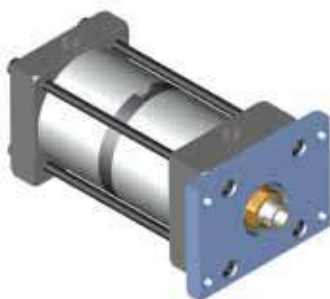
ME5 - HEAD RECTANGULAR MOUNT



ME6 - CAP RECTANGULAR MOUNT



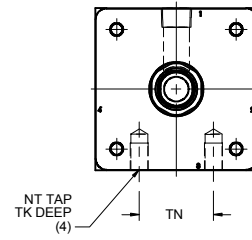
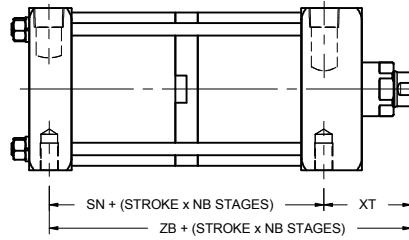
MF1 - HEAD FLANGE MOUNT



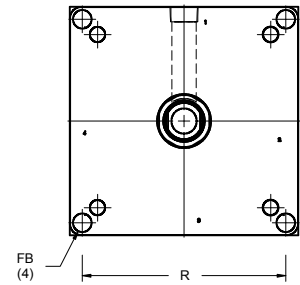
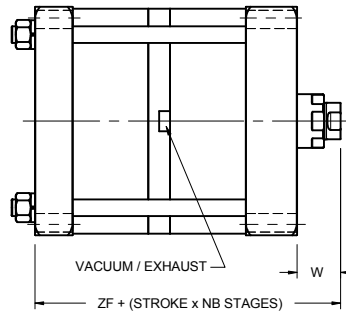
BORE	R	TF	UF	FB	B	C	E	F	G	J	V	W
1 1/2	1,43	2 3/4	2 3/8	5/16	1 1/8	3/8	2	3/8	1 1/2	1	5/8	5/8
2	1,84	3 3/8	4 1/8	3/8	1 1/8	3/8	2 1/2	3/8	1 1/2	1	5/8	5/8
2 1/2	2,19	3 7/8	4 5/8	3/8	1 1/8	3/8	3	3/8	1 1/2	1	5/8	5/8
3 1/4	2,78	4 11/16	5 1/2	7/16	1 1/2	1/2	3 3/4	5/8	1 3/4	1 1/4	7/8	7/8
4	3,32	5 7/16	6 1/4	7/16	1 1/2	1/2	4 1/2	5/8	1 3/4	1 1/4	7/8	7/8
5	4,12	6 5/8	7 5/8	7/16	1 1/2	1/2	5 1/2	5/8	1 3/4	1 1/4	7/8	7/8
6	4,88	7 5/8	8 5/8	9/16	2	5/8	6 1/2	3/4	2	1 1/2	1	1

M3 SERIES- Mounting Dimensions

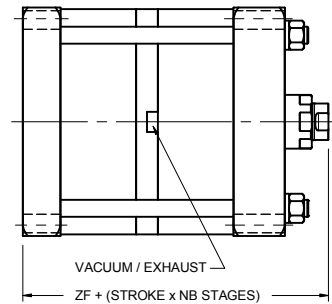
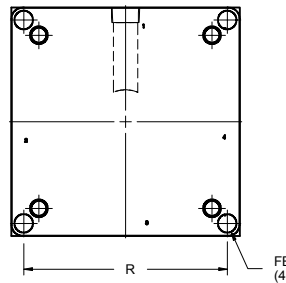
MS4 - SIDE TAPPED MOUNT



ME3 - SQUARE HEAD MOUNT (ONLY FOR 8, 10 & 12" BORE)



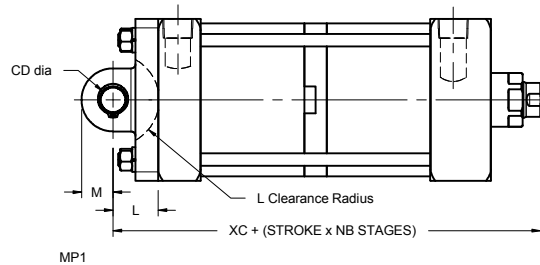
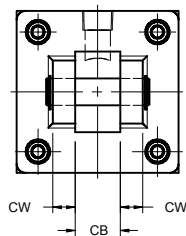
ME4 - SQUARE CAP MOUNT (ONLY FOR 8, 10 & 12" BORE)



BORE	SN ₂	SN ₃	SN ₄	NT	TK	TN	XT	FB	R	W
1 1/2	4	5 3/4	7 1/2	1/4-20	3/8	5/8	1 15/16	X		
2	4	5 3/4	7 1/2	5/16-18	1/2	7/8	1 15/16			
2 1/2	4 1/4	6 1/8	8	3/8-16	5/8	1 1/4	1 15/16			
3 1/4	4 5/8	6 5/8	8 5/8	1/2-13	3/4	1 1/2	2 7/16			
4	4 5/8	6 5/8	8 5/8	1/2-13	3/4	2 1/16	2 7/16			
5	5 1/8	7 3/8	9 5/8	5/8-18	1	2 11/16	2 7/16			
6	5 5/8	8 1/8	10 5/8	3/4-10	1 1/8	3 1/4	2 13/16			
8	5 7/8	8 1/2	11 1/8	3/4-10	1 1/8	4 1/2	2 13/16			

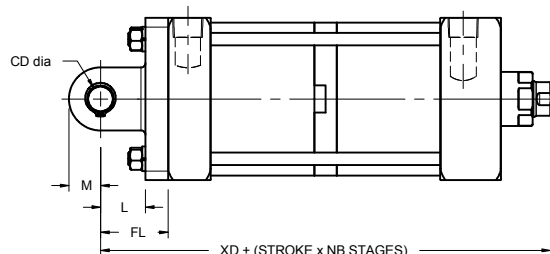
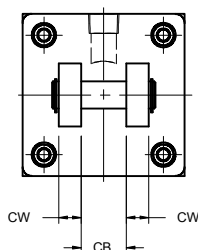
M3 SERIES - Mounting Dimensions

MP1 - SHORT CLEVIS MOUNT



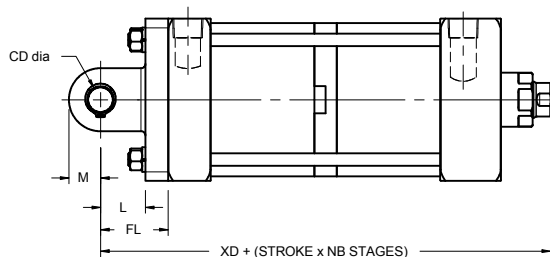
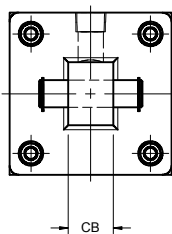
MP1

MP2 - LONG CLEVIS MOUNT



MP2

MP4 - EYE PIVOT MOUNT



MP4

BORE	CB	CD	CW	FL	L	M	2 STAGES		3 STAGES		4 STAGES	
							XC ₂	XD ₂	XC ₃	XD ₃	XC ₄	XD ₄
1 1/2	3/4	1/2	1/2	1 1/8	3/4	5/8	7 1/8	7 1/2	8 7/8	9 1/4	10 5/8	11
2	3/4	1/2	1/2	1 1/8	3/4	5/8	7 1/8	7 1/2	8 7/8	9 1/4	10 5/8	11
2 1/2	3/4	1/2	1/2	1 1/8	3/4	5/8	7 3/8	7 3/4	9 1/4	9 5/8	11 1/8	11 1/2
3 1/4	1 1/4	3/4	5/8	1 7/8	1 1/4	7/8	8 7/8	9 1/2	10 7/8	11 1/2	12 7/8	13 1/2
4	1 1/4	3/4	5/8	1 7/8	1 1/4	7/8	8 7/8	9 1/2	10 7/8	11 1/2	12 7/8	13 1/2
5	1 1/4	3/4	5/8	1 7/8	1 1/4	7/8	9 3/8	10	11 5/8	12 1/4	13 7/8	14 1/2
6	1 1/2	1	3/4	2 1/4	1 1/2	1 1/4	10 5/8	11 3/8	13 1/8	13 7/8	15 5/8	16 3/8
8	2	1	3/4	2 1/4	1 1/2	1 1/4	10 7/8		13 1/2		16 1/8	

M3 SERIES - Hall Effect & Reed switches

Reed switches are constructed of two overlapping ferromagnetic reeds which are sealed in a glass tube with the ends aligned and a small gap between them. When an external magnetic force is applied, the reed assumes opposite polarity, the ends of the reeds attract each other and make contact, completing the circuit. Reed switches are not recommended in sensitive areas since they can introduce electrical noise into the circuit due to bounce and vibration from mechanical closing of the reeds.

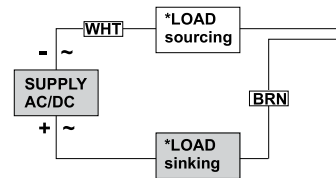
Hall Effect switches are solid state switches with no moving parts. The solid state switches is activated when the silicon chip (Hall) senses a magnetic field. Since there are no moving parts, Hall effect switches can operate in sensitive areas without sending interference or noise into the circuit.

Switch specifications

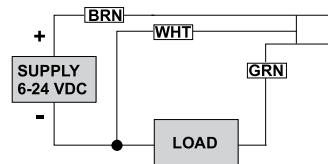
Switch part Number	862-100-004	862-100-031	862-100-032
Spec	Reed switch, MOV, LED	Electronic Sensor, LED, Sourcing	Electronic Sensor, LED, Sinking
Cable Length	9 ft PVC Cable		
Switching Voltage	5-120 VDC/VAC 50/60 Hz	6-24 VDC	6-24 VDC
Switching Current	0.5 Amp Max .005 Amp Min	0.5 Amp Max	0.5 Amp Max
Switching Power	10 Watts Max.	12 Watts Max.	12 Watts Max.
Switching Speed	0.5 μ s operate 0.1 μ s release	1.5 μ s operate 0.5 μ s release	0.5 μ s operate 0.1 μ s release
Voltage Drop	3.5 Volts	1.0 Volts	1.0 Volts
Temperature Range	-20° to 80°C -4° to 176°F		
Switch Function	SPST Normally Open	Normally Open PNP output	Normally Open NPN output
Shock	Up to 30G (11 msec.)	-	-
Vibration	Up to 20G (10-55 Hz)	-	-

Wiring Diagrams

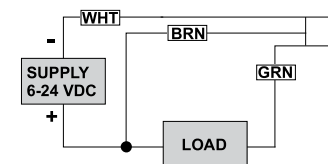
REED SWITCH 04



ELECTRONIC SWITCH 31 LED, SOURCING



ELECTRONIC SWITCH 32 LED, SINKING



How To Order

Order Clamp Separately see below

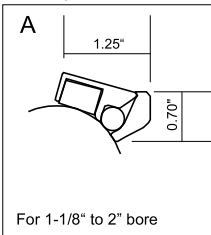
862 - 100 - X XX

Series	Connections	Type Code
862	0 -9ft PCV wire	02 - Reed switches
762	1 - 8 mm Quick Connect with Pigtail (std)	04 - Reed switches
	3 -8 mm Quick Connect	31 - Hall Effect PNP
		32 - Hall Effect NPN

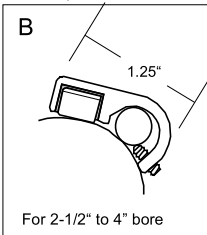
quick connect switches available

To Order Switch Clamp Use: (no charge when ordered with switches)

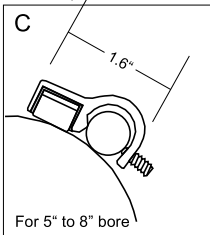
A clamp = 800-A00-000



B clamp = 800-B00-000



C clamp = 800-C00-000



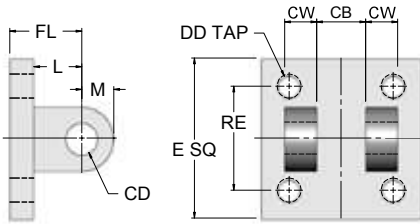
Clamp dimensions



M3 SERIES - Accessories

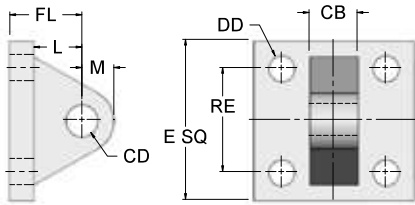


NFPA CLEVIS BRACKET



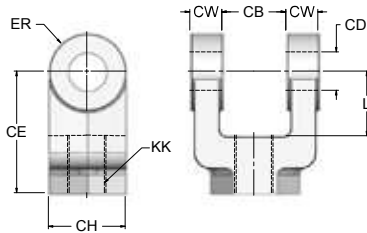
Part #	CB	CD PIN DIA.	CW	DD	E	FL	L	M	RE	USED WITH MP4
CB-05	.765	1/2	1/2	3/8-24	2 1/2	1 1/8	3/4	1/2	1 5/8	1.5, 2 & 2.5
CB-07	1.265	3/4	5/8	1/2-20	3 1/2	1 7/8	1 1/4	3/4	2 9/16	3.25, 4 & 5
CB-10	1.515	1	3/4	5/8-18	4 1/2	2 1/4	1 1/2	1	3 1/4	6, 7 & 8
CB-13	2.032	1 3/8	1	5/8-18	5	3	2 1/8	1 3/8	3 13/16	8, 10 & 12
CB-17	2.531	1 3/4	1 1/4	7/8-14	6 1/2	3 1/8	2 1/4	1 3/4	4 15/16	10 & 12

NFPA EYE BRACKET



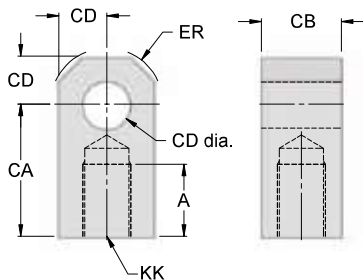
Part #	CB	CD PIN DIA.	DD	E	FL	L	M	RE	USED WITH MP1 & MP2
EB-05	.750	1/2	13/32	2 1/2	1 1/8	3/4	1/2	1 5/8	1.5, 2 & 2.5
EB-07	1.25	3/4	17/32	3 1/2	1 7/8	1 1/4	3/4	2 9/16	3.25, 4 & 5
EB-10	1.50	1	21/32	4 1/2	2 1/4	1 1/2	1	3 1/4	6, 7 & 8
EB-13	2.00	1 3/8	21/32	5	3	2 1/8	1 3/8	3 13/16	8, 10 & 12
EB-17	2.50	1 3/4	29/32	6 1/2	3 1/8	2 1/4	1 3/4	4 15/16	10 & 12

NFPA ROD CLEVIS



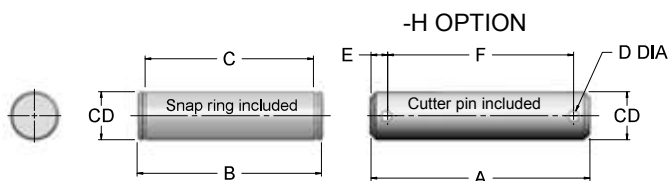
Part #	CB	CD PIN DIA.	CE	CH HEX.	CW	ER	KK	L
RC-05	.765	1/2	1 1/2	1	1/2	1/2	7/16-20	3/4
RC-07	1.265	3/4	2 3/8	1 1/4	5/8	3/4	3/4-16	1 1/4
RC-10	1.515	1	3 1/8	1 1/2	3/4	1	1-14	1 1/2
RC-13	2.032	1 3/8	4 1/8	2	1	1 3/8	1 1/4-12	2 1/8
RC-17	2.531	1 3/4	4 1/2	2 3/8	1 1/4	1 3/4	1 1/2-12	2 1/4
RC-20	2.531	2	5 1/2	2 15/16	1 1/4	2	1 7/8-12	2 1/2

NFPA ROD EYE



Part #	A	CA	CB	CD PIN DIA.	ER	KK
RE-05	3/4	1 1/2	3/4	1/2	5/8	7/16-20
RE-07	1 1/8	2 1/16	1 1/4	3/4	7/8	3/4-16
RE-10	1 5/8	2 13/16	1 1/2	1	1 3/16	1-14
RE-13	2	3 7/16	2	1 3/8	1 9/16	1 1/4-12
RE-17	2 1/4	4	2 1/2	1 3/4	2	1 1/2-12
RE-20	3	5	2 1/2	2	2 1/2	1 7/8-12

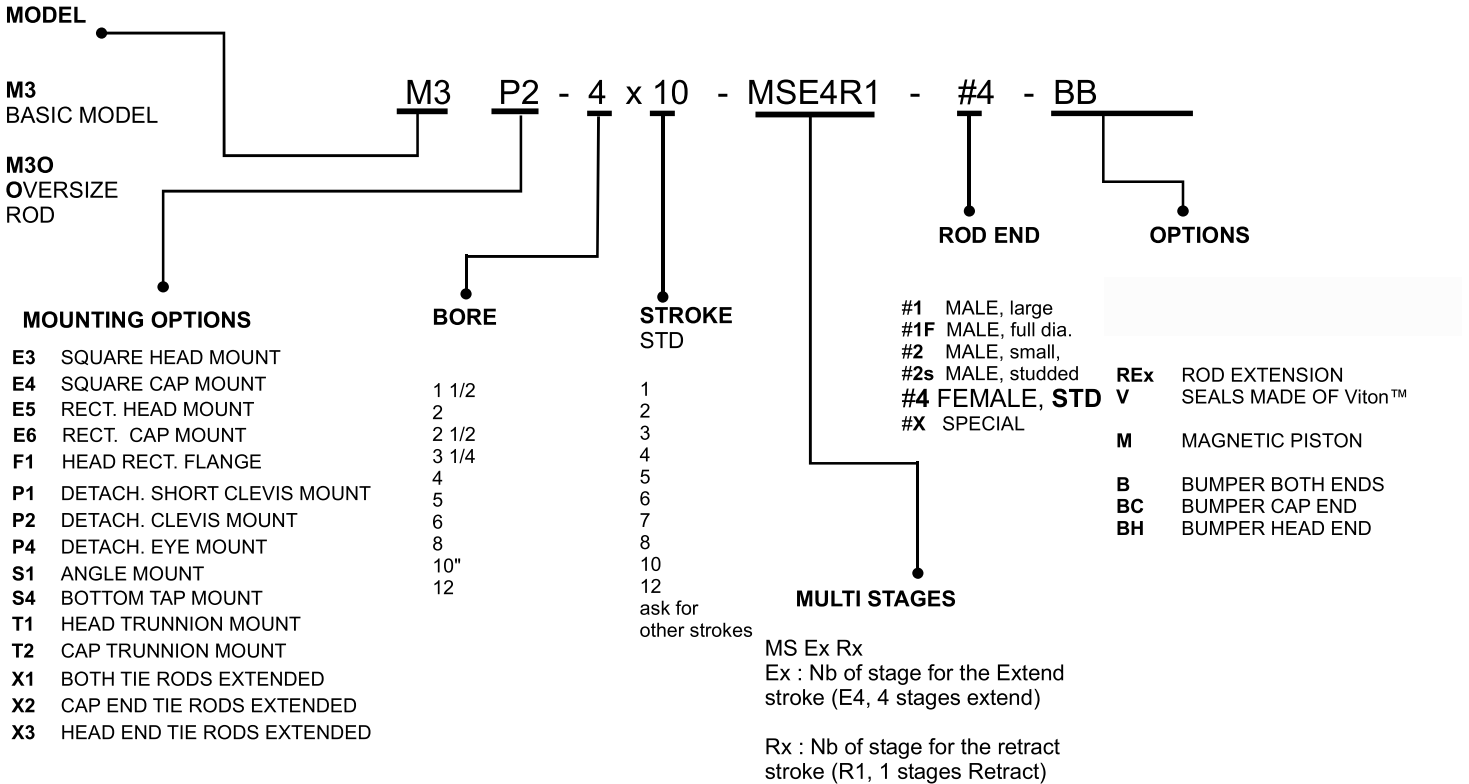
NFPA PIN



Part #	CD	A	B	C	D	E	F
P-05	1/2	2.281	2.094	1.875	0.106	0.172	1.938
P-07	3/4	3.094	2.875	2.625	0.140	0.188	2.719
P-10	1	3.594	3.375	3.125	0.140	0.188	3.219
P-13	1 3/8	4.656	4.485	4.187	0.173	0.203	4.25
P-17	1 3/4	5.656	5.547	5.188	0.173	0.219	5.250
P-20	2	5.719	5.547	5.188	0.204	0.234	5.281

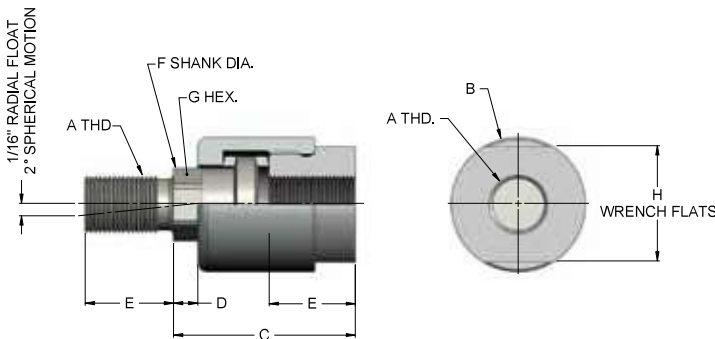
M3 CYLINDERS - How to Order

EXAMPLE M3P2-4x10-MSE4R1-B is a M3 series, 4" bore, 10" stroke, 4 stages in extend Stroke, 1 in retract, clevis mount, female rod thread, with Bumpers



To order seal kits add the prefix M3SK to the bore and rod diameter ex: M3SK-4000-1000-ExRx and for gland kit add the prefix M3BK to the rod diameter ex: M3BK-1375

Linear Alignment Couplers

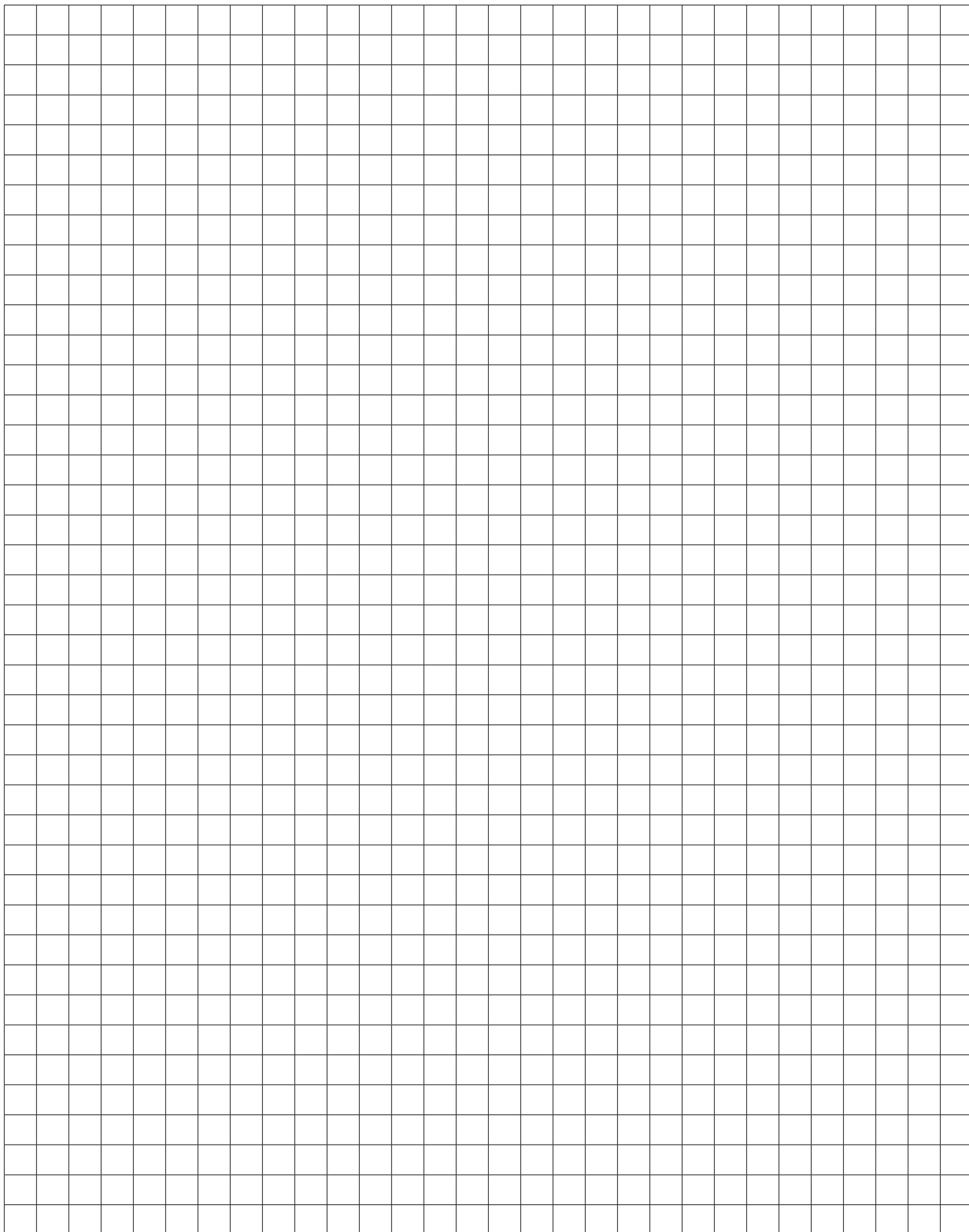


Star cyl's linear alignment couplers extend the bearing and seal life of your cylinders. Our couplers prevent binding and erratic movement that misalignment causes, which eventually wears down your cylinders. Not only do Star cyl couplers work equally well in "push" and "pull" applications, but they allow a greater tolerance between the cylinder center line and the mating member.

* Use jam nut to lock coupler to rod when used with full diameter threads.

Part #	A	B	C	D	E	F	G	H	MAX PULL AT YIELD
AC-250F	1/4-28	7/8	1 1/4	1/4	5/8	0.245	3/16	13/16	6000
AC-312F	5/16-24	7/8	1 1/4	1/4	5/8	0.308	1/4	13/16	8300
AC-375C	3/8-16	7/8	1 1/4	1/4	5/8	0.369	5/16	13/16	5000
AC-375F	3/8-24	7/8	1 1/4	1/4	5/8	0.370	5/16	13/16	8300
AC-437F	7/16-20	1 1/4	2	1/2	3/4	5/8	9/16	1 1/8	10000
AC-500C	1/2-13	1 1/4	2	1/2	3/4	5/8	9/16	1 1/8	14000
AC-500F	1/2-20	1 1/4	2	1/2	3/4	5/8	9/16	1 1/8	14000
AC-625F	5/8-18	1 1/4	2	1/2	3/4	5/8	1/2	1 1/8	14000
AC-750C	3/4-10	1 3/4	2 5/16	5/16	1 1/8	31/32	7/8	1 1/2	34000
AC-750F	3/4-16	1 3/4	2 5/16	5/16	1 1/8	31/32	7/8	1 1/2	34000
AC-875F	7/8-14	1 3/4	2 5/16	5/16	1 1/8	31/32	7/8	1 1/2	34000
AC-1000C	1-8	2 1/2	2 15/16	1/2	1 5/8	1 3/8	1 1/4	2 1/4	64000
AC-1000F	1-14	2 1/2	2 15/16	1/2	1 5/8	1 3/8	1 1/4	2 1/4	64000
AC-1250F	1 1/4-12	2 1/2	2 15/16	1/2	1 5/8	1 3/8	1 1/4	2 1/4	64000
AC-1375F	1 3/8-12	2 1/2	2 15/16	1/2	1 5/8	1 3/8	1 1/4	2 1/4	64000
AC-1500F	1 1/2-12	3 1/4	4 3/8	13/16	2 1/4	1 3/4	1 1/2	3	134000
AC-1750F	1 3/4-12	3 1/4	4 3/8	13/16	2 1/4	1 3/4	1 1/2	3	134000
AC-1875F	1 7/8-12	3 3/4	5 7/16	11/16	3	2 1/4	1 7/8	3 1/2	240000
AC-2000F	2-12	3 3/4	5 7/16	11/16	3	2 1/4	1 7/8	3 1/2	240000

M3 CYLINDERS - NOTES



PNEUMATIC & HYDRAULIC

STARCYL CYLINDERS

• 1994 •

www.starcyl.com • 1 877 782-7295

www.starcyl.com

SPACE-SAVER AIR CYLINDERS

SINGLE OR MULTI-STAGE

THE ONLY CYLINDER UPGRADABLE!

STAR 1 SERIES

Not Enough Force
Don't Change The Design
Add A Stage!

STAR1 - Multistage
Upgradable air cylinders

www.starcyl.com

SPACE-SAVER

STAR2 SERIES

NFPA STYLE MOUNT

- Bore size from 1 1/2" to 10"
- Stroke up to 40"
- Save Space up to 35%
- 250 PSI AIR OIL
- Two Year Warranty
- Economic design

STAR2 - NFPA style
Mount spacesaver air cylinders

www.starcyl.com

STAR3 SERIES

...To boldly go where no cylinder has gone before ...

STAR3 SERIES
www.starcyl.com

- NFPA Interchangeable
- Heavy Duty Air Cylinders
- Front Mount Bearings
- 11 Bore Sizes From 1.5" through 12"
- Strokes - available in any practical length
- 18 Standard Mounting Styles
- Adjustable Air Cushion Standard
- 250 PSI AIR/OIL
- Two Year Warranty
- Economic Design

STAR3 - Heavy Duty
NFPA interchangeable air cylinders
Aluminum construction

NFPA ROD LOCK CYLINDER

STAR3RL option

FEATURES	BENEFITS
No Rod Displacement on Engagement	Maintains Accurate Positioning
Large Clamping Surface	Consistent Clamping Force
IP67 Rated Seals to NEMA 4X	Suitable for Wash-Down Areas
Fast Response Time	High Cycle Rates, Accuracy
Extremely Low Backlash	Precision Holding
Spring-Engaged Units	Holds Load During Power/Pressure Loss
Standard 2-Threaded Cylinders	Long Maintenance-Free Life
4 bar (60 psi) Release Pressure	Compact Unit, Easy Integration
	Broad Application

STAR3RL - NFPA Rod
Lock for STAR3 air cylinders

www.starcyl.com

SPACE ONE
Space. The Final Frontier ...

Space Saver Air Cylinders

SO - Space One,
Spacesaver Air Cylinder

www.starcyl.com

MEDIUM DUTY HYDRAULICS

STAR4 SERIES

STAR5 SERIES

MEDIUM DUTY SERVICES
INDUSTRIAL TIE ROD CONSTRUCTION

STANDARD BORE SIZES 1.5" THROUGH 6"
PISTON ROD DIAMETERS 3/8" THROUGH 1.2"
20 STANDARD MOUNTING STYLES
STARRITE™ AVAILABLE ON EVERY STEEL PARTS

STAR4 - Heavy Duty
NFPA interchangeable air cylinders
Steel Construction

STAR5 - Medium Duty
NFPA interchangeable Hydraulic cylinders
Steel Construction

www.starcyl.com

HEAVY DUTY Hydraulic Cylinders

STAR6 SERIES

HEAVY DUTY SERVICE
INDUSTRIAL TIE ROD CONSTRUCTION
NOMINAL PRESSURE - 3000 PSI

STANDARD BORE SIZES 1.5" THROUGH 6"
PISTON ROD DIAMETERS 3/8" THROUGH 1.2"
18 STANDARD MOUNTING STYLES
STARRITE™ AVAILABLE ON ALL STEEL PARTS

STAR6 - Heavy Duty
NFPA interchangeable Hydraulic cylinders,
3000 psi

www.starcyl.com

ISOMETRIC SERIES
AIR CYLINDER ISO 6432 & 15552

STMM SERIES

STMM - Isometric series
ISO 6432 & 15552
Air Cylinder

WWW.STARCYL.COM

YOUR STARCYL DISTRIBUTOR:

STARCYL CYLINDERS
877-STARCYL

FAX: (630) 282-7142

IN CANADA: PH: 450-688-0505 - FAX 514-221-3798



M3-SE2012